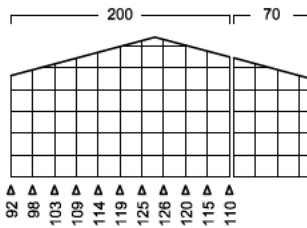


# ZWEIRADGARAGE PLUS TYP - A - 200

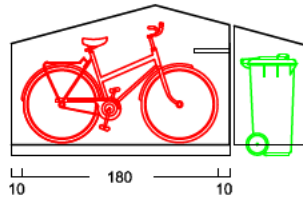
VOLUMEN CA. 6600 L

INNENMASS RASTER 20 cm

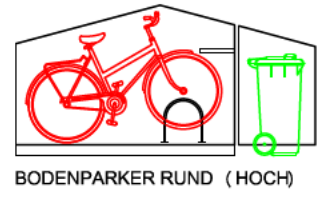


15 GRAD DACHNEIGUNG

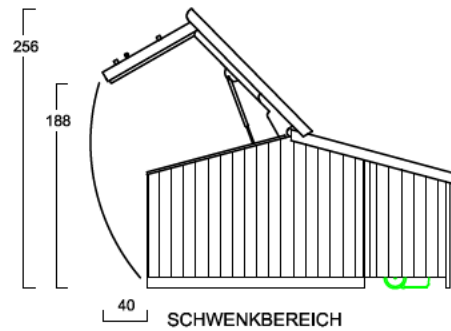
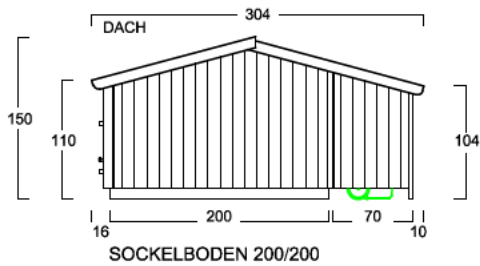
FAHRRAD MIT  
LENKERHÖHE 110 cm



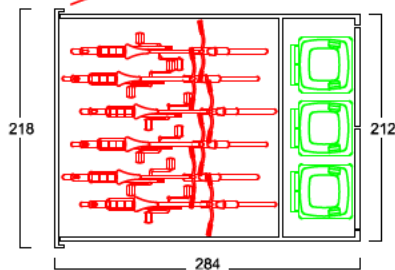
FAHRRAD MIT  
LENKERHÖHE 110 cm



BODENPARKER RUND (HOCH)

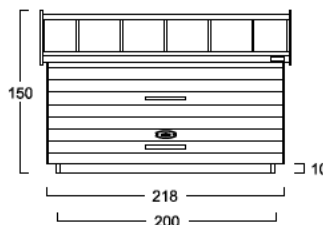


EINFAHRWAND / KLAPPDACH



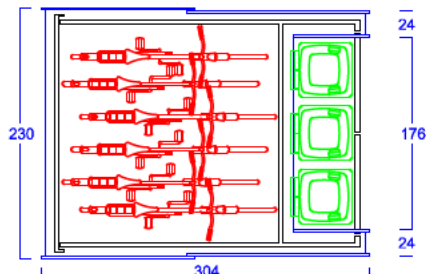
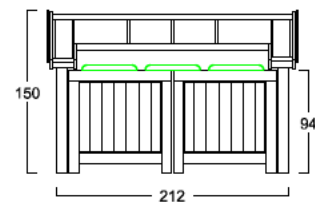
MASSE: AUSSENWAND

ANSICHT:  
EINFAHRT FAHRRÄDER  
KLAPPDACH

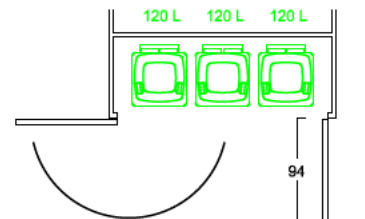


SOCKELBODEN

ANSICHT:  
BEREICH MÜLLGEFÄSE  
FLÜGELTÜREN



MASSE: DACH (STIRNBRETT)



BEIDE TÜREN MIT 180 GRAD ÖFFNUNG

Stauraum für bis zu 6 Fahrräder  
und 3 Mülltonnen a. 120 Liter

www.zweiradgarage.de  
Fahrradgaragen Motorradgaragen  
Billbrookdeich 329 / 22113 Hamburg  
Tel.: 040 - 98 23 16 72  
Fax 040 - 98 23 16 73



info@zweiradgarage.de